



# **RUN POWERED BY ADP®**

## **Proposal**

For Certna



## Solution Detail for Certna\*:

Employees	2
Payroll Frequency	Bi-Weekly
Start Date	08-17-2021

### Payroll

- Payroll Processing
- Tax Filing
- Delivery
- New Hire Reporting
- Electronic Reports
- Employee Access
- ADP Mobile Payroll
- General Ledger Interface
- Pay Option: FSDD

### HR

- State and Federal Resources
- HR Checkups
- Tip of the Week
- Quarterly HR Newsletter
- HR Dictionary
- New Hire Paperwork
- Employment Verification
- Lifemart
- Small Business Marketing Toolkit

### Processing Investment

Product	Billing Frequency	Per Processing Fee
<b>ADP Essential Payroll</b>	Bi-Weekly	\$45.56 **

Base price (\$56.15 ) + Per employee price (\$2.70 )

\*\*In the event of additional jurisdictions, there will be a \$7 charge per month/jurisdiction.

### Annual W2 Fees

Y/E Information Stmt, W2 2 W2's	Annually	\$66.85
Base price (\$54.95) + Price per W2 (\$5.95)		
W-2 Delivery	Annually	\$12.95

\*This is a Proposal only. Fees are estimates and are subject to change based on variation in payroll details, frequency, features, number of employees, etc. Additional fees may be incurred if other services are purchased or for additional tax filings including, but not limited to, additional states or 'applied for' statuses. Please consult with your sales representative for further details. The information contained in this proposal is confidential and proprietary and should not be shared with anyone outside your company.

# RUN Powered by ADP® Essential Payroll

Welcome to ADP®! It's time to meet your new payroll platform: **RUN Powered by ADP®**.  
Because you don't want just any payroll solution – *you want the best.*

With ADP, you can:



**Run Payroll**  
the way you want –  
online, via our mobile  
app or by phone



**Calculate,  
Deduct and Pay Taxes**  
automatically



**Get Answers 24/7**  
from experienced payroll  
professionals



**Pay Your People**  
conveniently with direct  
deposit

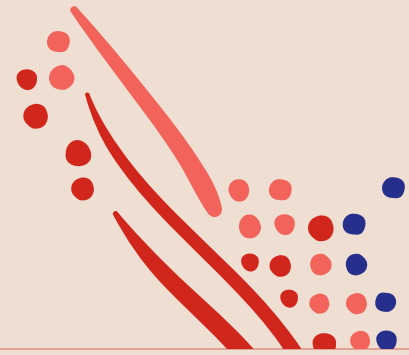


## Plus, benefit from these additional features:

- View, export or print detailed reports online, instantly
- Integrate our solutions with POS systems and accounting programs such as Intuit®, Wave, Xero™ and more
- Access HR tools and best practices to help your HR-related strategies
- Provide employees easy access to pay history and up to three years of W-2s/1099s
- Give your accountant access to payroll reports and tax forms through our award-winning Accountant Connect<sup>SM</sup>
- Get discounts on nationally recognized, brand-name products and local retailers with Employee Discounts
- With new hire onboarding, you can free up time by letting new employees fill out their own paperwork before their first day on the job

With a streamlined process and powerful technology, it's designed to make payroll – and other HR tasks – quick and easy. You'll complete yours in no time!

ADP, the ADP logo, Employee Access, RUN Powered by ADP and Always Designing for People are registered trademarks of ADP, Inc. and/or its affiliates. Accountant Connect is a service mark of ADP, Inc. All other marks are the property of their respective owners. Copyright © 2019 ADP, Inc. All rights reserved.



Always Designing  
for People™